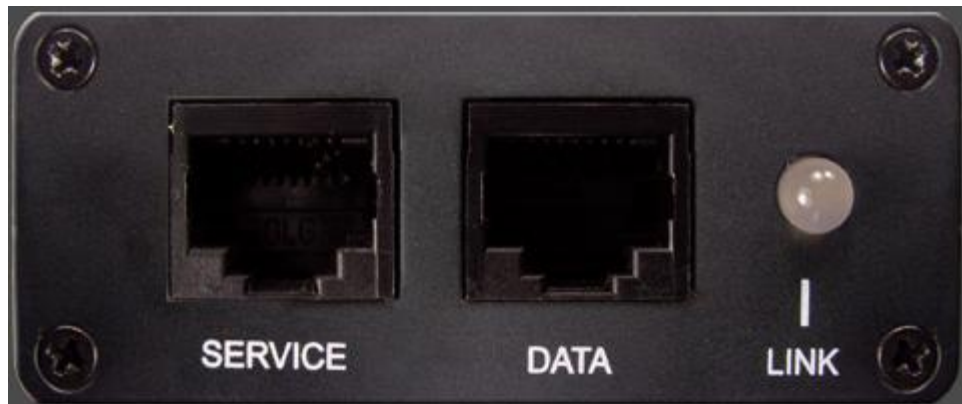


DreamBox Users Manual

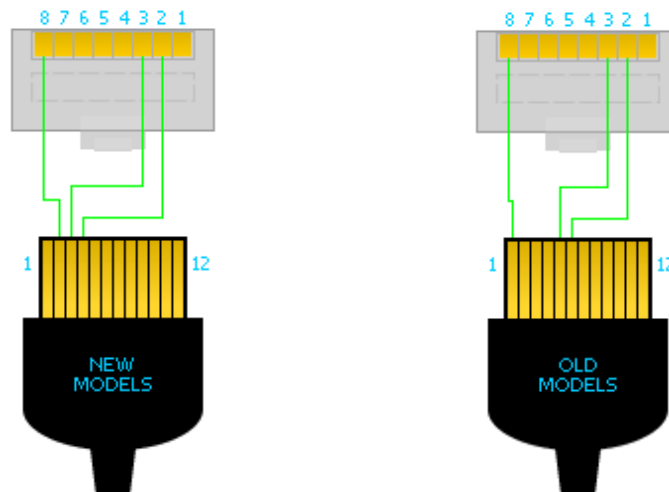
Interface Description

DreamBox Interface



There are 2 connector inputs on the front side of the DreamBox:

- "Service" input – for battery and test point cables
- "Data" input – for phone data cables



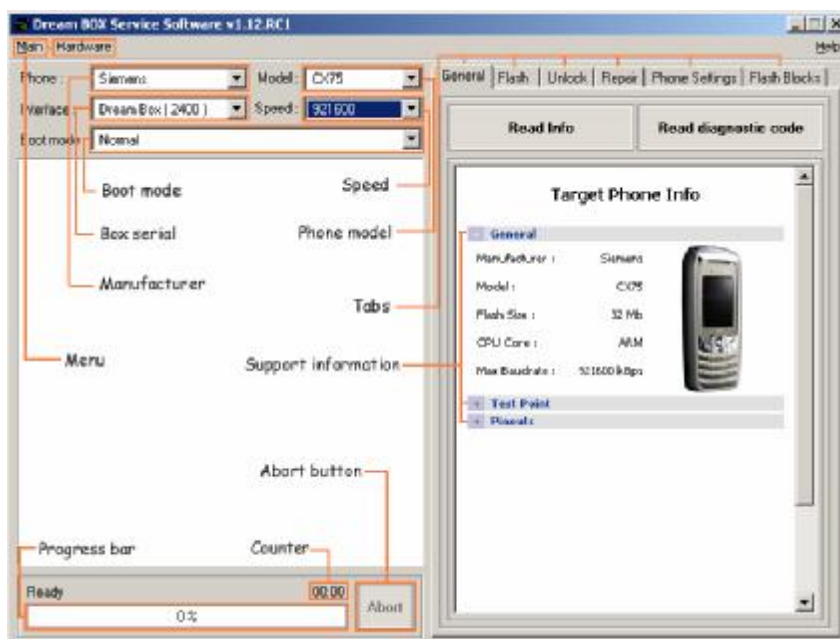
There is a three-color led on the front side of the DreamBox. It shows current device state. Each color bound to certain device mode:

Green – READY. Device is in standby mode – ready to start operations.

Green/Red blinking – PROCESS. Operation is begin progressed. Wait until the led changes its colour to green.

Red – ERROR. See Troubleshooting.

DBSS (DreamBox Service Software) Interface



Cables



For new models
(5x-6x-7x)



For old models
(3x-4x-50)



Testpoint & battery cable
1, 2 – testpoint connectors
3 – battery connector

Testpoint cable EGold modification (PDF) (http://www.dreambox.hk/S-Gold_E-Gold.pdf)

Get Started

Activate DreamBox

1. Visit our site www.dreambox.hk and choose **DreamBox Update** in **DOWNLOAD** section.
2. Get latest version of DBSS.
3. Connect DreamBox and install drivers
4. Run DBSS
5. Choose **Hardware->DreamBox->Update Firmware** in main menu.

Download & install DreamBox Service Software (DBSS) and drivers

1. Visit our site www.dreambox.hk and downloads latest versions of drivers and DBSS in **DOWNLOAD** section.

Start working with the DreamBox

To start working with the DreamBox you should perform the following steps:

1. Connect the box to PC using USB connector. Operating system will inform you about new device detected.
2. If operating system has not identified new device automatically, you should select manual search for needed driver. Specify the path to the DreamBox driver and wait until system installs it.
3. Open **Start > Settings > Control Panel > System**, on the **Hardware** tab click the **Device Manager** button. In the device manager window open **Universal Serial Bus controllers** node. Make sure that this node contains **DreamBox** sub node and there are no conflicts. If there is a conflict, contact hardware/software consultant.
4. Run the DBSS application. The program will notify you of your DreamBox serial number and application version. Light indicator on DreamBox device will be green.
5. To update DBSS version, driver or firmware, visit our web site at <http://www.dreambox.hk>.

How to use testpoint cable

1. Connect testpoint cable to DreamBox
2. Connect battery cable with “+” by the battery contact in the phone
3. Start operation in DBSS
4. Connect probe with button to testpoint in phone.
5. Push probe button
6. Wait while DBSS will boot phone.
7. Take away a probe.

After that you can use Auto (for SGOLD phones) or Stored Boot Key (for EGOLD phones) boot mode.

Boot modes description

Connect Testpoint cable to SERVICE and phone cable to DATA

Auto

In this boot mode software searches for available bugs.

Firmware Bug (manual)

Boot usage firmware bug (with the use of the manual operations). This boot mode usage in S-Gold platform phone models if **Auto** boot mode can't boot phone.

Folder and slider phone models must be opened!

Sim card must be removed from phone!

1. Power on the phone
2. Connect phone to box
3. Click **Read Info** in **General** tab
4. Go to the **Surf&Fun** -> **Application**-> menu
5. Go to the **SReader** folder
6. Start **Sreader** applet
7. Click **Ok**
8. Click **Yes**

After that you can use **Auto mode**

Boot Core Bug

Boot usage old boot core bug.

Test Point

Boot phone usage test point cable.

IMEI

Boot phone by IMEI (only for phones, that was be booting before).

Stored Boot Key

This boot mode uses stored or manually entered keys for EGold phones

Normal

This boot mode can be used if:

- Phone has blank boot core.
- Phone boot core does not initialize.
- Phone boot core was patched (can boot with wrong keys).

Normal (Cut track)

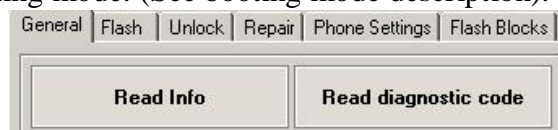
Boot after cut track

Functional Operations

Reading Information about the Phone

This functionality can show you most information about phone (IMEI, flash model, SW version etc.)

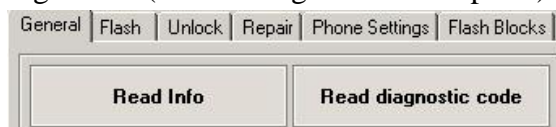
1. Connect DreamBox to PC and run DBSS. The light indicator is green, which means that DreamBox device is ready to work.
2. Connect the phone to the front side of DreamBox. Phone must be switched off, and the battery should be charged at least for 40% of its overall power.
3. In the DBSS choose needed phone model and booting mode. (See booting mode description).
4. Select **General** tab and click **Read Info** to get restricted information.
5. The light indicator is blinking, which means that you should wait until the process is over.
6. In the **log** field you should be able to see the information about the phone



Reading Diagnostic code

This functionality can show you most error codes returned from phone.

1. Connect DreamBox to PC and run DBSS. The light indicator is green, which means that DreamBox device is ready to work.
2. Connect the phone to the front side of DreamBox. Phone must be switched on, and the battery should be charged at least for 40% of its overall power.
3. In the DBSS choose needed phone model and booting mode. (See booting mode description).
4. Select **General** tab and click **Read diagnostic code** button to get diagnostic code.
5. Power on the phone (press power button on the phone).
6. In the log field you will see diagnostic code



Reading full phone flash

Use this chapter for reading and saving phone full flash.

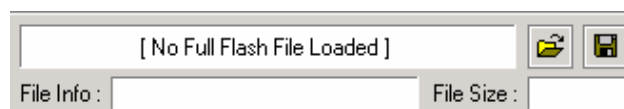
1. Repeat steps 1-3 of Reading Information about the Phone chapter.
2. Select **Flash** tab.
3. Check phone model
4. Check boot mode and speed
5. Open Full Phone Flash file
6. Click “Read Full Phone Flash” button
7. After job continue save file



Writing selected flash blocks (use Flash Tree)


This functionality allow write some standard flash blocks (language packs, bootcore etc.) from flash file to phone.

1. Repeat steps 1-3 of Reading Information about the Phone chapter.
2. Select **Flash** tab.
3. Check phone model
4. Check boot mode and speed
5. Open Full Phone Flash file
6. Check flash blocks in Phone Flash Tree
7. Click Write Selected Flash Blocks




Unlock all locks

Unlock all phone locks.

1. Repeat steps 1-3 of Reading Information about the Phone chapter.
2. Select **Unlock** tab. 
3. Check phone model
4. Check boot mode and speed
5. Click **Unlock All Locks**


Set Auto-Lock

Use this chapter for lock phone to sim-supported net.

1. Repeat steps 1-3 of Reading Information about the Phone chapter.
2. Select **Unlock** tab. 
3. Check phone model
4. Check boot mode and speed
5. Click **Set Auto-Lock**.
6. Insert SIM-Card
7. Reboot the phone
8. Phone automatically locked to sim-supported net

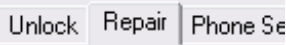
Lock to net

Use this chapter for locking phones to custom net.

1. Repeat steps 1-3 of Reading Information about the Phone chapter.
2. Select **Unlock** tab. 
3. Check phone model
4. Check boot mode and speed
5. To lock the phone to the certain network, specify network code in corresponding field called **Network Code** and click **Lock to Net** button. Switch phone on and wait until the operation is over. You can save your locking settings of one phone to be used on another one.

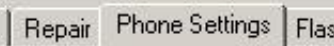
Restoring IMEI



Using this chapter you can restore damaged phone IMEI.

1. Repeat steps 1-3 of Reading Information about the Phone chapter.
2. Select **Repair** tab. 
3. To update or restore an IMEI (International Mobile Equipment Identifier), checked the Use factory IMEI from flash OTP Area checkbox. To change an IMEI, type former 14 digits of the digital number and click the Repair IMEI button.
4. If checkbox Do not update / repair security area will be checked all network locks still be saved. In another case all lock will be unlocked.

Read / write phone settings

Use this chapter for reading settings from phone into file or writing settings from file to phone.



1. Repeat steps 1-3 of Reading Information about the Phone chapter.
2. Select **Phone Settings** tab. 
3. Check phone model

4. Check boot mode and speed
5. If you want to read phone settings click **Read All Phone Settings** button
6. Save settings in file.  
7. If you want to write phone settings: open settings file, check settings in the settings tree, that you want to write and click **Write Selected Settings** button.

Reading custom flash block memory

This functionality allow read and save some custom flash block from phone.

1. Repeat steps 1-3 of Reading Information about the Phone chapter.

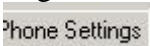

2. Select **Flash Block** tab.  
3. Check phone model
4. Check boot mode and speed
5. Enter Flash Starting Address
6. Enter Data Size
7. Enter File Offset
8. Click Read Flash Block
9. After job continue save file




Reading custom flash block memory

This functionality allow write custom flash block from flash file to phone.

1. Repeat steps 1-3 of Reading Information about the Phone chapter.

2. Select **Flash Block** tab.  
3. Check phone model
4. Check boot mode and speed
5. Open Phone Flash file
6. Enter Flash Starting Address
7. Enter Data Size
8. Enter File Offset
9. Click Write Flash Block



How to change language or repair a phone

There are two types of files in www.boot-loader.com:

- **Firmware files** – file consists of ".exe.dtf" or "firmware" in the file name (converted from Siemens SW files)
- **Fullflash files** - file consists of "fullflash" in the file name or are in a **FullFlash** folder

Firmware file consists of:

- Firmware (Application)
- Language
- T9

FullFlash file consists of:

- Boot core
- Firmware (Application)
- Language
- File System (FFS)
- Settings (EEPROM)

Use Firmware files if you want to update phone firmware or change language.

Use Fullflash files if you want to repair phone.

You can use "**bin**" fullflash file format (from other programs), or "**exe**" (original Siemens firmware) format.

Steps for working with phone software::

1. Read full phone settings (backup)
2. Write fullflash to the phone
3. Do Repair IMEI
4. Write full phone settings to the phone (from backup)

There are to ways for the change of phone language.

- Change language pack without update firmware:
 1. Get firmware file (firmware version must be the same as in the phone) with necessary www.boot-loader.com or download original Siemens SW from Siemens language from official site.
 2. Open file in DBSS
 3. Select necessary flash block in the flash tree (**Language**)
 4. Click **Write Selected blocks**
- Change language pack with update firmware:
 1. Get firmware file with necessary language from www.boot-loader.com or download original Siemens SW from Siemens official site.
 2. Open file in DBSS
 3. Select necessary flash block in the flash tree (**Firmware**)
 4. Click **Write Selected blocks**

Language Groups (LG) and T9-Language Groups (TGL) codes

LG codes

Countries	Text LG	Text Languages
UK, Irl, France, Africa, Germany, Italy, Benelux	1	English, German, French, Turkish, Dutch, Italian, Arab
Norway, Denmark	2	English, German, Danish, Norwegian, Swedish, Finnish
Sweden, Finland	2	English, German, Danish, Norwegian, Swedish, Finnish
Poland, Hungary	3	English, German, Czech, Polish, Slovakian, Hungarian
Czech, Slovakia	3	English, German, Czech, Polish, Slovakian, Hungarian

Countries	Text LG	Text Languages
Greece, Bulgaria, Turkey	4	English, Turkish, Greek, Russian, Bulgarian, Romanian
Spain, Portugal, Latin America	5	English, German, French, Spanish, Portuguese, Catalan, Brazilian Portuguese
Slovenia, Croatia, Serbia, Switzerland	6	English, German, French, Italian, Slovene, Croatian, Serbian
Thailand, Philippines, Malaysia, Indonesia	7	Hindi, English, Tagalog, Thai, Malay, Indonesian, Vietnamese
China	8	English 2, Simplified Chinese, Traditional Chinese
Israel	90	English, French, German, Arab, Hebrew, Russian, Italian
Baltic	91	English, Latvian, Lithuanian, Russian, Polish, Estonia, Ukraine
Middle East	92	English, Arab, Farsi, Urdu, Tagalog, Hindi, Malayalam
USA / Canada / Mexico	95	US English, Mexican Spanish, Canadian French

TLG codes

No.	T9 Languages
1	English, German, French, Dutch, Italian
2	English, Danish, Norwegian, Swedish
3	English, Polish, Hungarian
4	English, Turkish, Greek
5	English, German, French, Spanish, Portuguese
6	English, German, French, Italian
7	English, German, French, Italian
8	English, Turkish, Greek
9	English, French, Arab
10	English, French, Hebrew
11	English, Russian, Polish
12	English, Norwegian, Swedish, Finnish
13	English, Czech, Slovakian, German

Software Update and Support

To update DBSS version or driver please visit our web site at <http://www.dreambox.hk> and perform instructions on installation.

Technical Characteristics

Dimensions	82 x 66 x 28 mm
Power	40 – 250 ma
Cable Type	USB
Data Transfer Speed (PC to DreamBox)	1.5 Mbps
Data Transfer Speed (DreamBox to phone)	921600 bps
Construction	Aluminum casing

Troubleshooting

After running DBSS, application can not find the DreamBox device and does not recognize its serial number

1. Check the connection with PC.
2. Use another USB cable.
3. Check whether the DreamBox device is present in the Device Manager list. Make sure there are no conflicts at driver-level. Re-install driver, if necessary.

While trying to read information about the phone, application does not provide any data, and phone is switched on after pushing its Power button

You connected phone cable to SERVICE input of DreamBox instead of DATA. Another reason is cable defect - change the cable.

While trying to perform any operation, program produces errors

- Selected phone model does not correspond to real - choose correct model.
- Your phone does not support selected boot mode - choose another boot mode.
- Boot is performed correctly but the preparatory operation is not performed (test point or cutting track)

After the DreamBox firmware update the application does not recognize DreamBox

Install new driver and read instructions at www.dreambox.hk.

After the driver update the application does not recognize DreamBox

Get new program version at <http://www.dreambox.hk>

I can not find needed GSM network operator in the list of available

You can input operator code if you know it. Please notify our support service about incorrect or inexistent codes.

In Windows 98 DreamBox Service Software working too slow

Please update your motherboard BIOS.

FAQ

Does DreamBox need to be activated?

Yes. You can activate it at our site www.dreambox.hk in DOWNLOAD section.

How do I know the firmware version or serial number of my DreamBox?

- Download our software (DreamBox Service Software) at www.dreambox.hk in DOWNLOAD section and install it.
- Connect your box
- Choose Hardware->DreamBox->Read Box Info in main menu

Do I need to configure my USB port for DreamBox?

No. You must be install drivers only.

How do I activate or update my DreamBox?

Visit our site www.dreambox.hk and choose DreamBox Update in DOWNLOAD section.

What should I do if my DreamBox doesn't update?

See chapter Troubleshooting

Power indicator blinks red. What does it mean?

It's means that some action doesn't finished successfully.

Can I use my DreamBox as a standalone device, or it has to be used with PC only?

You can use DreamBox only with PC.

What software supports DreamBox interface and where to download it?

DreamBox Service Software (DBSS). You can download it at our site www.dreambox.hk in DOWNLOAD section.

What types of flash files could be used with DreamBox and where to find them?

Our software (DBSS) can open and use binary format (bin), Siemens format (WinSwup tools & Update tools (*.exe)) and our .dtf format. But you can save in .dtf format only.

Does Update of DreamBox require use of any specific browser?

Yes. You should be use Microsoft IE 5.0 or higher with enabled ActiveX content

Warranty

We guarantee correct work of our device during 6 months from purchase date and support on software-level during 36 months. This warranty does not cover additional means (cables etc.). This warranty is void if the warranty label has been removed or defaced.

Who is Providing This Warranty?

GSMDream Team, as the developer of this DreamBox product (your "Product") through their dealership network.

What Does This Warranty Cover?

This warranty covers defects in materials or workmanship in your Product under normal use and conditions.

What is the Period of Coverage?

This warranty covers your Product for 180 days from the activation date.

Who is Covered?

This warranty covers the end-user consumer purchaser. Coverage carries on if you sell or otherwise transfer your Product.

What Will We Do To Correct Problems?

We will repair your Product or replace your Product with a new or reconditioned equivalent product, at our option.

How Do You Get Service?

Contact your official reseller for obtaining warranty service.

What Does This Warranty Not Cover?

This warranty DOES NOT COVER:

- Damage due to misuse, abuse, alteration, unauthorized repair, or accident (such as improper electrical current);
- Cosmetic damage;
- Cables, connectors and accessories;
- This warranty also DOES NOT COVER, and in no case will we be liable for, any incidental damages (such as transportation costs to and from an authorized service provider / repair centre, or loss of time) or consequential damages (such as cost of repairing or replacing other property with your Product or other accessories, or external electrical systems) resulting from the use of your Product.